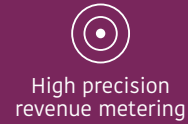


ProQ 100

Revenue meter with leading edge power quality features



High precision, comprehensive power quality measurements
multiple communications channels, easy integration

ProQ 100 is a true innovation that combines precision class revenue metering with leading edge power quality measurement. The product range covers HV and MV configurations for applications at different hierarchy levels in generation, transmission and distribution grids. ProQ 100 provides a wide range of features and meets high accuracy standards while providing power quality measurements in line with the latest power quality standards. ProQ 100 is well suited for use by grid operators and industrial customers to:

- Monitor and manage electricity grids and energy contracts
- Monitor supply quality and ensure regulatory compliance
- Analyze industrial plant supply networks for disturbances (origin) and impact on sensitive loads

With the flexibility to retrofit/upgrade existing systems, multiple communications channels and standard protocol support, ProQ 100 is easy to integrate with multiple systems for simultaneous communications (e.g. power quality monitoring, SCADA and remote meter reading applications).



Application

- High precision revenue metering
- Contracts requiring compliance with latest power quality standards e.g. IEC 61000-4-30 Class A
- Installations requiring compliance verification with voltage supply standards, e.g. EN 50160
- Harmonic analysis for power quality problems
- Integrated power quality monitoring and analysis solution for utility supply and industrial networks
- Providing metering and power quality (PQ) data to substation and industrial automation systems

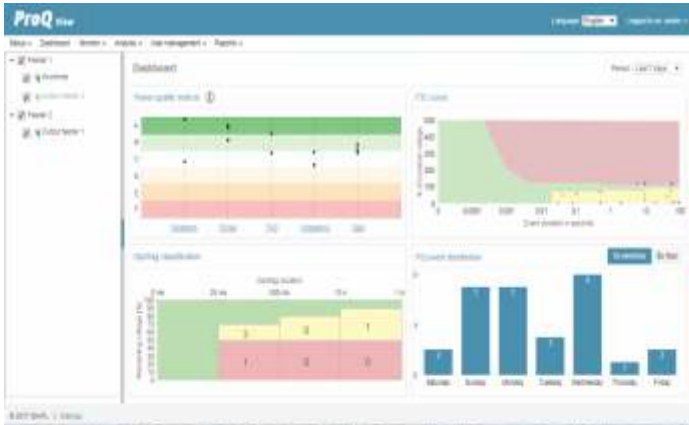
Benefits

- Accurate measurements for energy contracts
- Power quality measurements in accordance with latest standards
- Multiple industry standard communications ports
- Multiple protocols for integration with SCADA and other automation systems (e.g. IEC 61850)
- Easy retrofit for all rack-mounting meters
- Large, high-resolution graphical display with intuitive interface
- Comprehensive power quality monitoring and analytics, using ProQ View® software (supplied)

Features

- PQ measurements certified to IEC 61000-4-30 class A and instrument to IEC 62586-2
- Power quality events logging for sag, swell, interruption and rapid voltage change
- Harmonics and inter-harmonics up to 50th order
- Distortion factors THD, TDD and waveform quality indices e.g. K factor and crest factor
- Unbalance including positive, negative and zero sequence measurements
- Comprehensive logging of instantaneous, energy and power quality parameters (dual loggers)
- Voltage and current recording for pre and post event analysis with RMS value (half-cycle) capture
- Built-in web server to access real-time values and powerful analytical capability through ProQ View

ProQ 100



Parameter name	Unit	Value	Tolerance	Status	Alarm	Event	Event type	Event description	Event status
Voltage L1	V	230	±10	OK					
Voltage L2	V	230	±10	OK					
Voltage L3	V	230	±10	OK					
Frequency	Hz	50.00	±0.5	OK					
Power factor L1		0.95	±0.05	OK					
Power factor L2		0.95	±0.05	OK					
Power factor L3		0.95	±0.05	OK					
THD L1	%	5.0	±0.5	OK					
THD L2	%	5.0	±0.5	OK					
THD L3	%	5.0	±0.5	OK					
THD L1	%	5.0	±0.5	OK					
THD L2	%	5.0	±0.5	OK					
THD L3	%	5.0	±0.5	OK					
THD L1	%	5.0	±0.5	OK					
THD L2	%	5.0	±0.5	OK					
THD L3	%	5.0	±0.5	OK					

Monitoring station	Parameter name	Current value	Reference value	Type	Phase	Severity	Event description	Event status
Station 1	Voltage L1	230.00	230.00	High	Voltage L1	High	Voltage L1	OK
Station 1	Voltage L2	230.00	230.00	High	Voltage L2	High	Voltage L2	OK
Station 1	Voltage L3	230.00	230.00	High	Voltage L3	High	Voltage L3	OK
Station 1	Frequency	50.00	50.00	High	Frequency	High	Frequency	OK
Station 1	Power factor L1	0.95	0.95	High	Power factor L1	High	Power factor L1	OK
Station 1	Power factor L2	0.95	0.95	High	Power factor L2	High	Power factor L2	OK
Station 1	Power factor L3	0.95	0.95	High	Power factor L3	High	Power factor L3	OK
Station 1	THD L1	5.00	5.00	High	THD L1	High	THD L1	OK
Station 1	THD L2	5.00	5.00	High	THD L2	High	THD L2	OK
Station 1	THD L3	5.00	5.00	High	THD L3	High	THD L3	OK
Station 1	THD L1	5.00	5.00	High	THD L1	High	THD L1	OK
Station 1	THD L2	5.00	5.00	High	THD L2	High	THD L2	OK
Station 1	THD L3	5.00	5.00	High	THD L3	High	THD L3	OK
Station 1	THD L1	5.00	5.00	High	THD L1	High	THD L1	OK
Station 1	THD L2	5.00	5.00	High	THD L2	High	THD L2	OK
Station 1	THD L3	5.00	5.00	High	THD L3	High	THD L3	OK
Station 1	THD L1	5.00	5.00	High	THD L1	High	THD L1	OK
Station 1	THD L2	5.00	5.00	High	THD L2	High	THD L2	OK
Station 1	THD L3	5.00	5.00	High	THD L3	High	THD L3	OK



High precision revenue metering

- Range covers HV3 and HV4 connections
- Accuracy to IEC 62053-22 Class 0.2S
- Highly accurate instantaneous parameters, power, frequency measurement
- Error compensation for CT/VT and line losses (linear/non-linear)
- Two metrology LEDs for accuracy testing
- Wide-range dual auxiliary power supply
- Sealing options for utility metering
- Advanced revenue protection features

Power quality monitoring and analytics

ProQ 100 combined with ProQ View - Secure's web-based, state of the art software - provides power quality data acquisition and analysis for comprehensive monitoring of electrical and power quality parameters and overall system health.

Through the acquisition of instantaneous values, energy and power quality parameters, ProQ View provides data in graphical and tabular formats, as well as EN 50160/ITIC reports.

From the raw data provided by ProQ 100, ProQ View provides a wide range of analytics, including:

- Intuitive dashboard for all critical power quality parameters
- Monitoring of power quality parameters and events
- Power quality compliance reporting to EN 50160, ITIC
- Supply quality indices - SAIFI, SAIDI, CAIDI
- Monitoring TDD and THD for voltage and current
- Real-time data monitoring
- Reports and trend monitoring
- Harmonic and inter-harmonic analysis

Advanced features

- 1 Gb/s fibre/copper for high-speed data exchange between meter and system
- DLMS (serial and TCP), Modbus (RTU and TCP), with optional IEC 61850 protocol support
- Optical port for IEC1107 and ANSI C12.18 communications
- Simultaneous communication on all ports, including multiple sessions on ethernet
- Independent pulse input and output for integration with other devices/systems
- Time synchronization options through SNTP
- Large intuitive colour graphical display for real-time data viewing, vector diagrams, waveforms, harmonic spectrum analysis and configuration settings
- Two LEDs for status/event indication
- Auto SMS and email notification for events and reporting, via external modem



Technical specifications

Electrical

Connection types	HV4/HV3
Measurement voltage range	3 x 57.7/100 or 3 x 63.5/110 (3P4W) 2 x 100....120 V (3P3W)
Measurement current range	In: 1..5A I _{max} : up to 10 A (configurable)
Accuracy	Class: 0.2S
<ul style="list-style-type: none">• Energy• Voltage• Current• Power• Frequency	0.1% for measurement range of voltage & current 0.1% for measurement range of voltage & current Class: 0.2S, or better for measurement range of voltage & current ±0.01 Hz
Burden of measurement inputs with auxiliary supply	Current circuit: <0.01 VA/phase @1A <0.25 VA/phase @5A
Maximum overload voltage on voltage measurement inputs	1.5 x V _{nom} continuously 2 x V _{nom} for 0.5 sec
Maximum overload current on current measurement inputs	1.2 x I _{max} continuously 10 x I _{max} for 3 sec 20 x I _{max} for 1 sec

Compliance

Metering	IEC62052-11 and IEC62053-22, IEC62053-24, IS14697, IS15959
Power quality	IEC61000-4-30 Ed. 3, IEC62586-2 (class-A), IEC61000-4-7, IEC61000-2-4, IEC61000-3-8, IEC61000-4-15, EN50160, IEEE1159-3 (PQDIF)
Safety	IEC61010-1
Electromagnetic compliance	CISPR 22 (class A) for radiated and conducted emissions IEC61000-4-2 (electrostatic discharge), IEC61000-4-3 (radiated susceptibility), IEC61000-4-4 (electric fast transients), IEC61000-4-5 (surge & impulse), IEC61000-4-6 (conducted susceptibility), IEC61000-4-12 (damped oscillatory waves)

Mechanical

Dimensions	Rack as per DIN 43862 and IEC 60297
Sealing provision	Meter, rack and back terminals

Environmental

IP compliance	Meter front fascia: IP 54 Inside panel: IP20
Operating temperature	-20 °C to +60 °C
Limit range of operation	-40 °C to +70 °C
Storage temperature	-40 °C to +70 °C
Essailec® connectors	-10 °C to +55 °C

Communication

Optical port	IEC1107 & ANSI C12.18
RS-232 port	Protocol: DLMS, Modbus (configurable) Baud rate: 1200 bit/s to 56 kbit/s, half duplex
RS-485 port	Protocol: configurable DLMS/MODBUS RTU Baud rate: 1200 bit/s to 56 kbit/s, half duplex
Ethernet port	Ethernet 1 over RJ-45, 10/100 Mbit/s Ethernet 2 SFP port 1 Gbit/s (for ethernet or FO termination) Optional IEC 61850 edition 1.0 and 2.0 on both ports
Power quality data	Power quality data exchange through IEEE 1159.3 PQDIF
USB port	Micro-B connector (DLMS)
Time synchronization	Through SNTP protocol



Technical specifications

Power supply

Type	Main auxiliary power supply & redundant auxiliary power supply
Range	48-230 V AC/DC, 50 Hz/60 Hz

Inputs and outputs

Independent fixed outputs	Fixed 4 outputs (24-230 V AC/DC @ 100 mA)
Independent configurable I/O	Configurable block of 4 I/Os (24-230 V AC/DC)

Display characteristics

Display type	4.3 inch colour graphical TFT display, size(105.5 x 67.2 mm), 480 x 272 pixels, pixel size (0.198 x 0.198 mm)
Languages	English, Swedish, German, French, Italian, Russian, Arabic (field configurable)
Remote display	Web server for monitoring and basic configuration Browser support: Google Chrome, IE9 or above

Measurements, data logging and analytics

Load profiling (typical)	<ul style="list-style-type: none">- Two time-based loggers- 100 parameters configurable in each logger- 28 energy channels, with integration period 1 to 60 minutes- Logging of more than 80 instantaneous and PQ parameters, with integration period 1 to 60minutes- Up to 300 days (@ 30 minute SIP for parameters 1..100)Up to 10 days (@ 1 minute SIP for parameters 1..100)
Logging and configurable parameters	<ul style="list-style-type: none">- 16 time-of-use tariff, 16 seasons, 16 day types and 16 time zones, 53 billing dates, daylight saving dates for 25 years- Alarms and compartments for event logging- Logging of 24 sets of historical data logging- Logging of 65 days for daily energy snapshot
PQ measurement and event logging	<ul style="list-style-type: none">- Measurements as per IEC 61000-4-30 ed. 3 class A- Logging of sags/swells and interruptions- Short- and long-term flicker values as per IEC 61000-4-15- Unbalance and individual sequence parameters logging- Alarms on display for PQ and revenue events
Harmonic distortion	<ul style="list-style-type: none">- Up to 50th individual harmonic for voltage and current inputs- THD, TDD and K factor, Crest factor
Analytics	<ul style="list-style-type: none">- Comprehensive analytics through ProQ View software

Australia

sales_australia@securemeters.com
www.securemeters.com/au

Dubai

sales_middleeast@securemeters.com
www.securemeters.com/me

Europe

sales_europe@securemeters.com
www.securemeters.com/eu

India, SE Asia, Africa

sales_india@securemeters.com
www.securemeters.com/in

UK

sales_uk@securemeters.com
www.securemeters.com/uk